



## Polo

The Polo system comes in powdercoated cast aluminium legs with black powdercoated steel understructure.. Black powdercoat is the standard offer. Its design allows for easy incorporation of a variety of cable management options.

Polo is only available in 720mm height.

LEAD TIME  
4-6 Weeks

MATERIALS  
Cast aluminium, steel

CERTIFICATIONS  
ISO 14001 Certified Factory

WARRANTY  
5 years

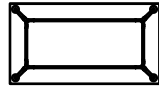




## Configurations

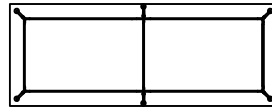
### Rectangle

700 TO 2400



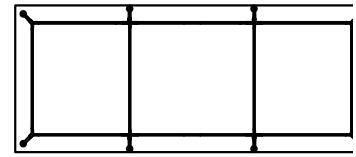
700 TO 2400

600 TO 1800



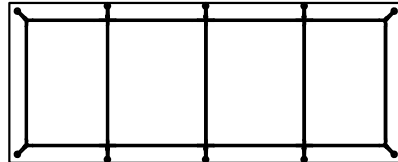
3000 TO 5400

2100 TO 2400



4200 TO 5400

2100 TO 2400

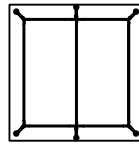


6000

### Square

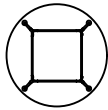


600 TO 1800

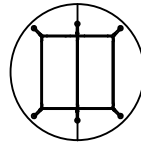


2100 TO 2400

### Round



600 TO 1800DIA



2100 TO 2400DIA

